



E-Scooter Share Program

Queens Community Board 8 Corral Plan

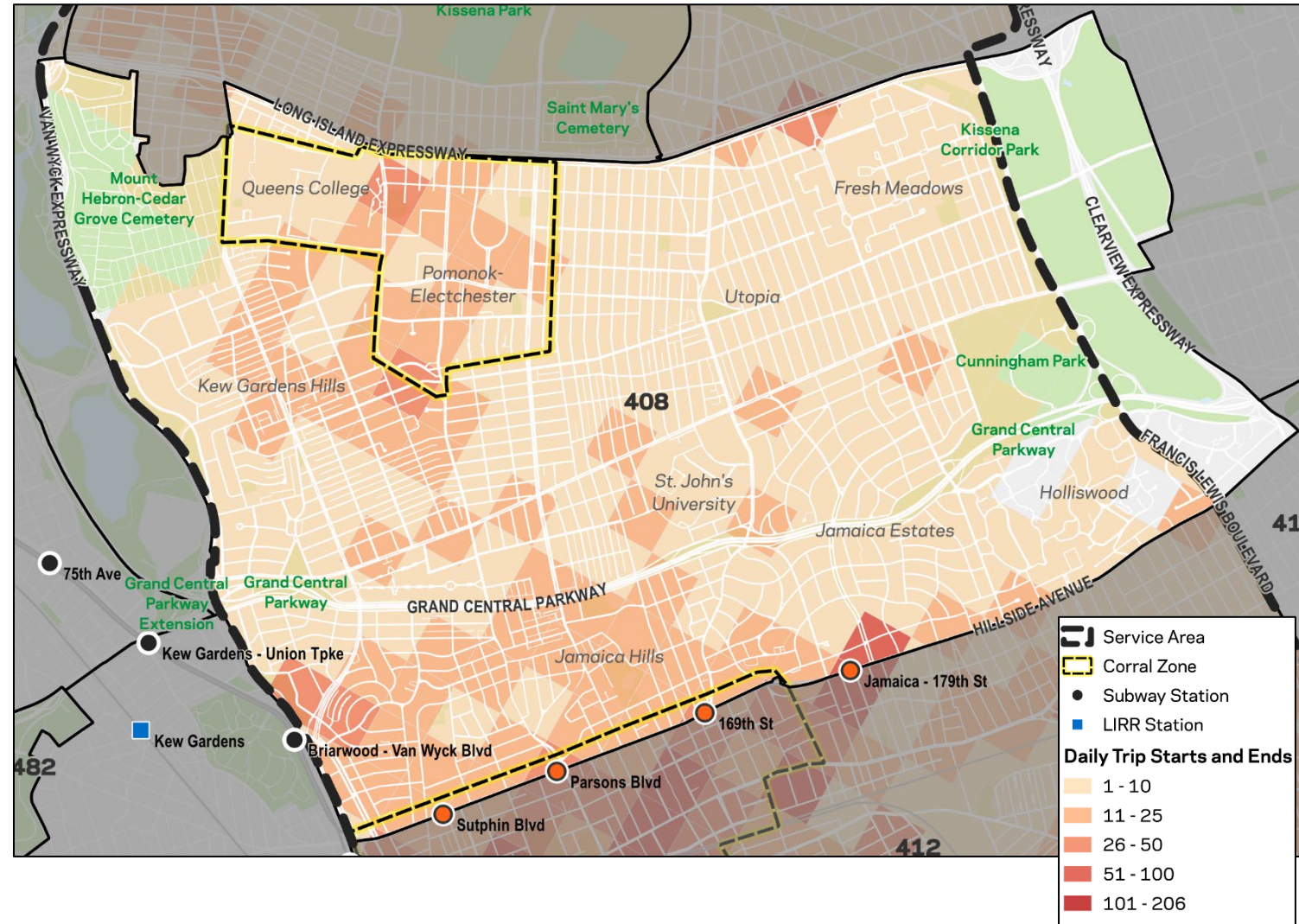
May 2025



Ridership Patterns

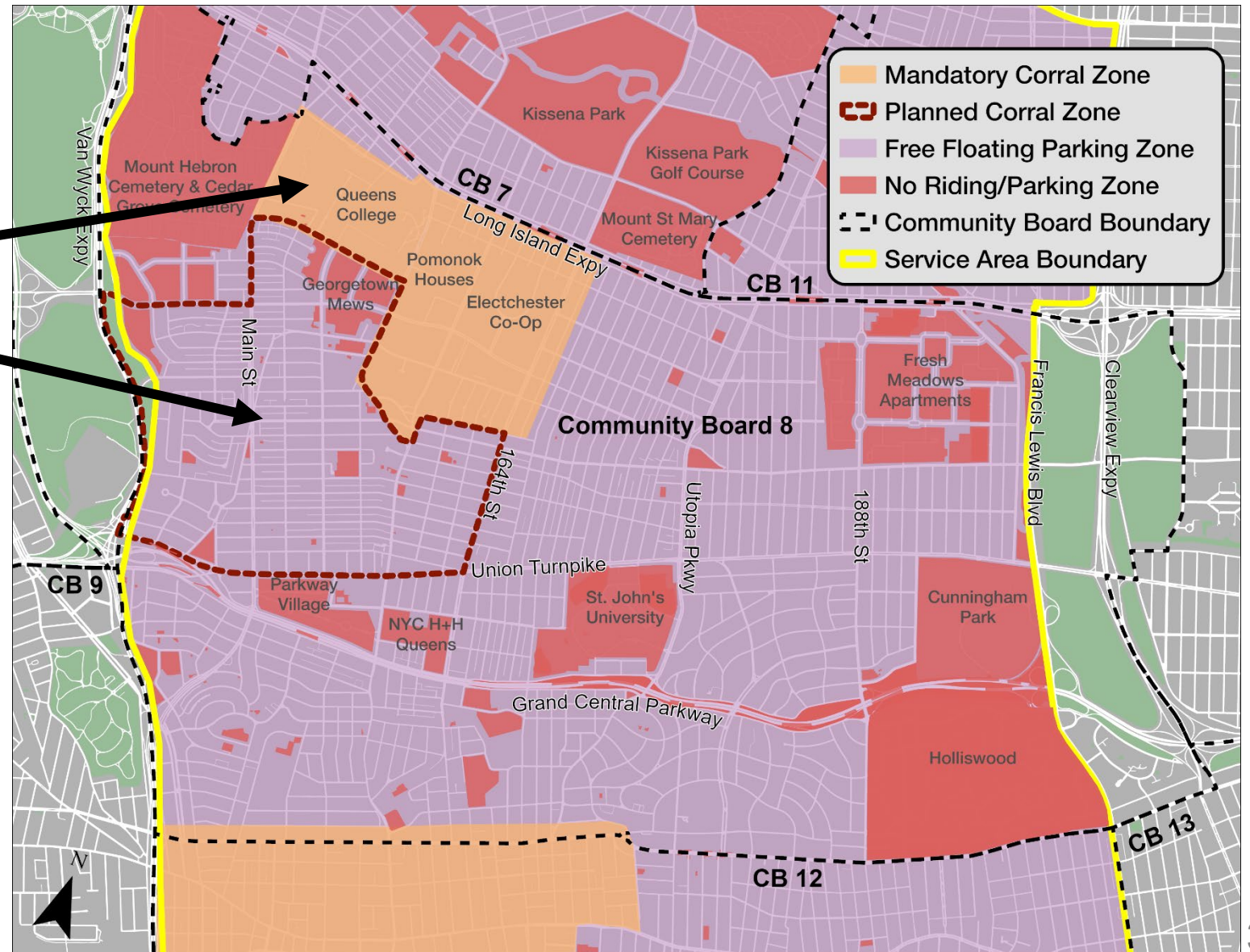
- Community Board 8
 - +190,000 trip starts
 - Riders are making local trips: approximately 80% of trips that start in CB 8 also end in CB 8
 - Average of 650 e-scooters in CB 8 since launch, 690 in last three months
- Eastern Queens
 - +1,000,000 trip starts

E-Scooter Share Trip Starts in Community Board 8



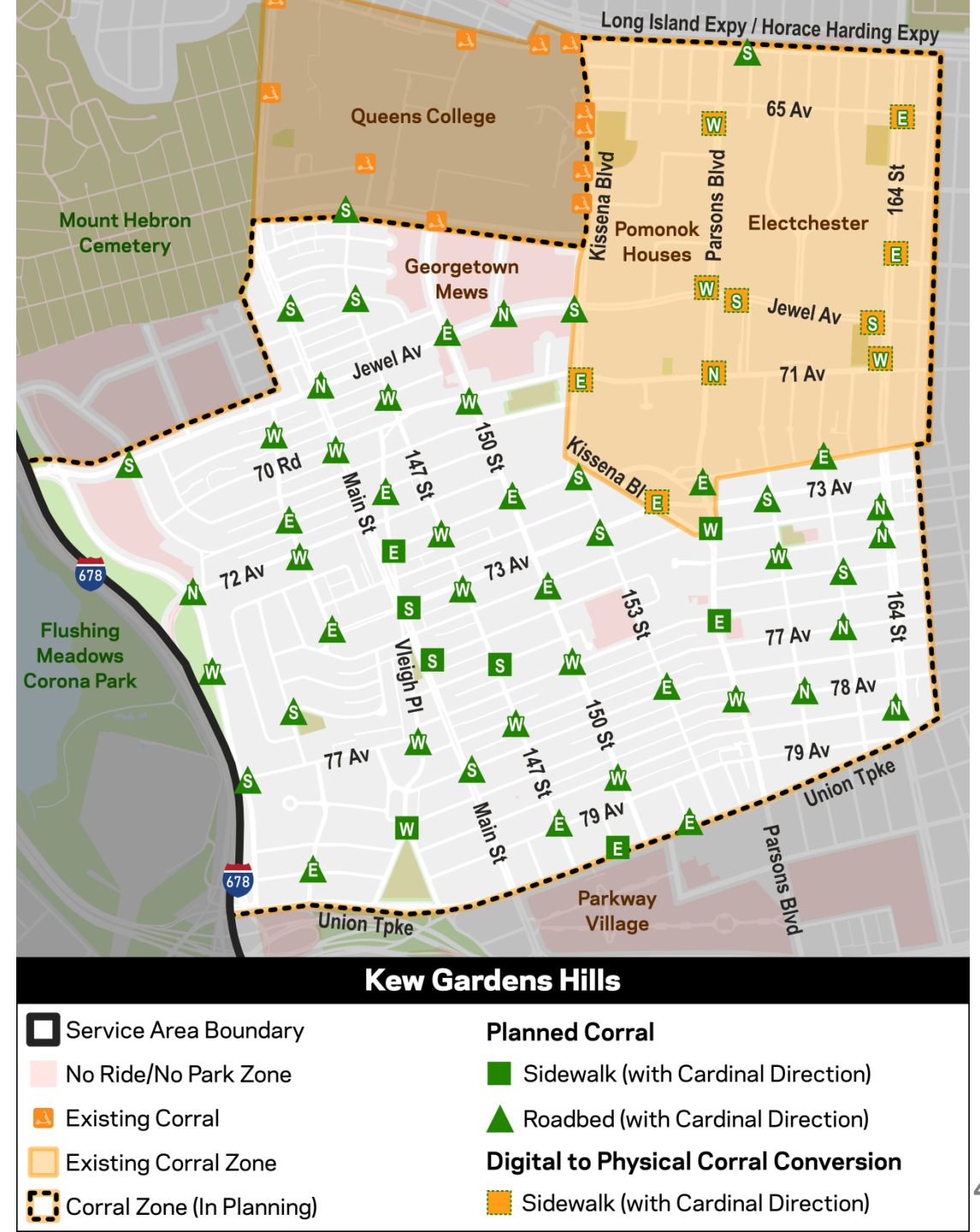
E-Scooter Share Existing Parking

- **Mandatory corral zones** in denser or high-ridership areas
 - Added 40 corrals in late 2024
 - Plan to add 50-60 corrals in Spring 2025
- **Free floating parking** available in less dense neighborhoods
- **No riding or parking** in parks, cemeteries, golf courses, or NYCHA campuses



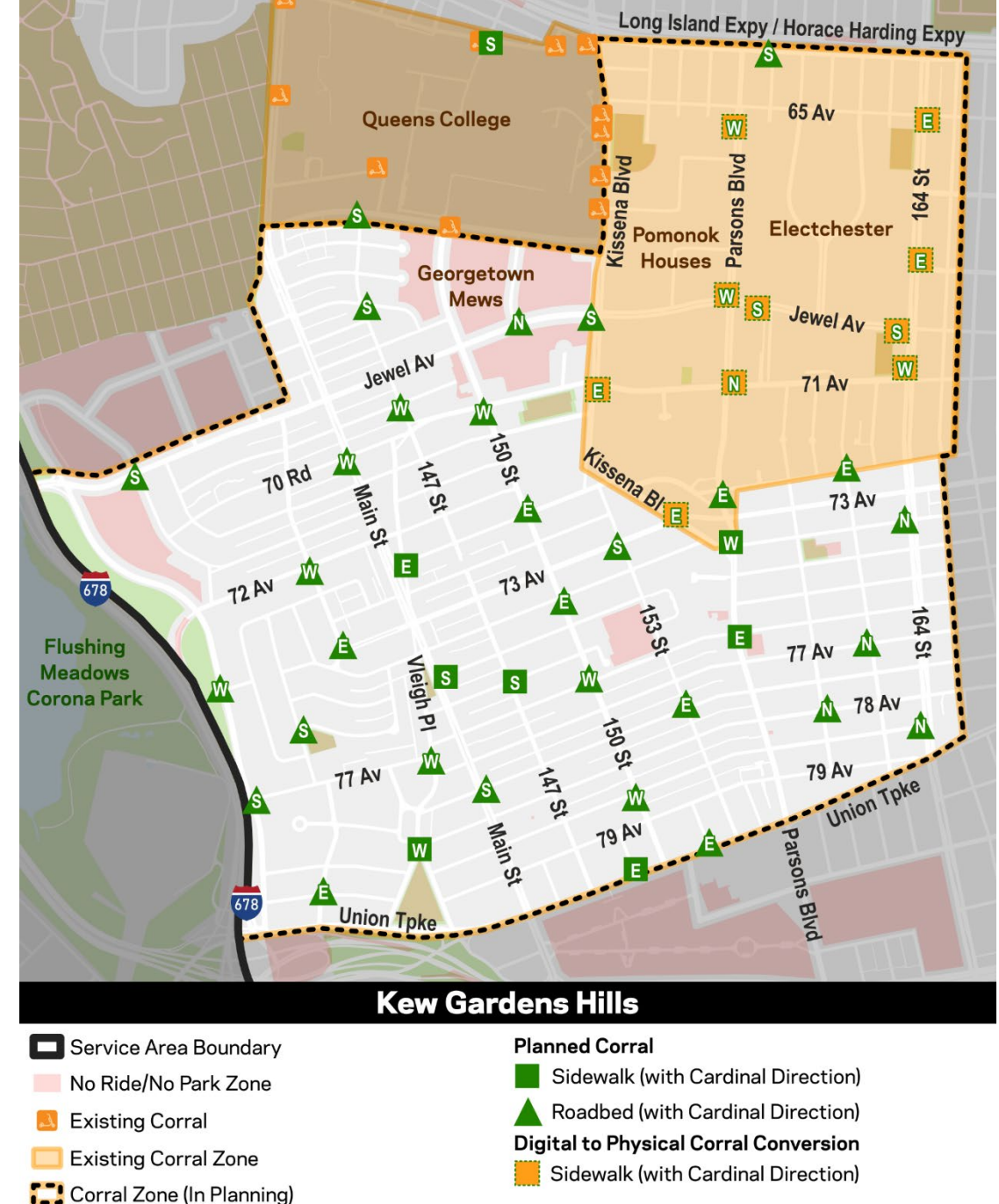
Planned Kew Garden Hills Corrals

- High density of corrals required to create sufficient parking and properly organize e-scooters
- **65 total corrals**
- **18 sidewalk corrals**
- **47 roadbed corrals**
 - 7 in existing NSA/NPA
 - 40 in existing ASP
 - Nearly all roadbed corrals are located at intersections and provide daylighting safety benefit



Updated - Planned Kew Garden Hills Corrals

- High density of corrals required to create sufficient parking and properly organize e-scooters
- **47 total corrals**
- **17 sidewalk corrals**
- **30 roadbed corrals**
 - 6 in existing NSA/NPA
 - 24 in existing ASP
 - Nearly all roadbed corrals are located at intersections and provide daylighting safety benefit



Next Steps

- Share updated corral plan with CB 8
- Install first phase of corrals in eastern half of corral zone
- Continue discussing some western site locations with stakeholders
- Aim to complete corral installations by fall 2025



Thank you! Questions?

Contact Information



Bird Three

hello@bird.co
866-206-2442



Lime Gen4

Help-new-York@li.me
888-546-3345



Astro Standing &
Cosmo Seated Scooters

opsnyc@veoride.com
855-836-2256

DOT Bike Share: nycscootershare.info scooter.share@dot.nyc.gov